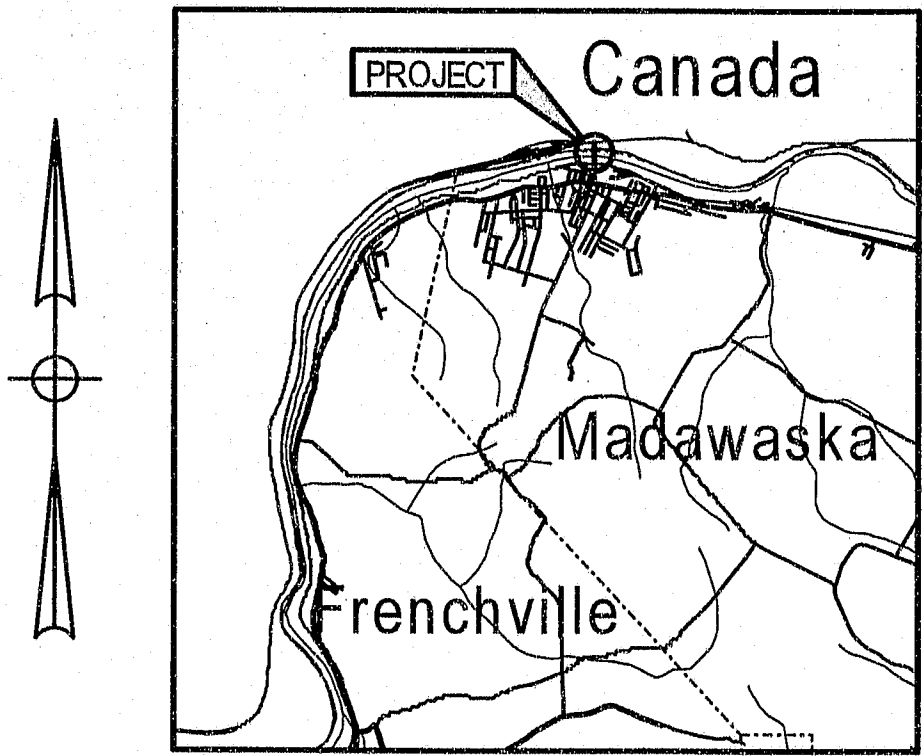


STATE OF MAINE
DEPARTMENT OF TRANSPORTATION



MADAWASKA
AROOSTOOK COUNTY
INTERNATIONAL BRIDGE
OVER
ST. JOHN RIVER
BRIDGE STREET

PROJECT LENGTH 0.287 km
BRIDGE PAINTING
BRIDGE NO. 2399



LOCATION MAP

SPECIFICATIONS

DESIGN: AASHTO LRFD Bridge Design Specifications, Second Edition
1998 and Interim Specifications 1999.

DESIGN LOADING

Live Load (Existing)..... MS18

TRAFFIC DATA

Current Average Annual Daily Traffic 2001..... 4330
Future Average Annual Daily Traffic 2021..... 5250
Design Hour Volume..... 10
Design Hour Volume (% AADT)..... 525
Heavy Trucks (% AADT)..... 3
Heavy Trucks (% DHV)..... 1
Directional Distribution (% DHV)..... 52
18 KIP Equivalent P 2.0..... 185
18 KIP Equivalent P 2.5..... 182
Design Speed (km/h)..... 40

BASIC DESIGN STRESSES

Concrete..... f'c = 30 MPa
Structural Steel..... f y = 250 MPa

UTILITIES

Adelphia
BARR
Madawaska Pollution Control
Madawaska Water District
Maine Public Service
Town of Madawaska
Verizon
Mill Sludge Pipes

MAINTENANCE OF TRAFFIC

1. A clear opening of 4.18 m (13'-9") X 3 m (9'-10") (Minimum Dimension) shall be maintained for vehicular traffic at all times. No equipment, staging or work shall encroach upon these limits.
2. A 0.9 m (3') pedestrian way will be protected from traffic and maintained at all times.

SCOPE OF WORK

- The Bridge is composed of four spans. The two U.S.A. spans are to be painted.
- 100 % removal of existing paint system. Approximate quantity of steel to be painted is 7000 m² (75,000 ft.²) Excludes galvanized steel stringers. For exact limits, see Special Provision 506 Lead Abatement and Coating Application.
- Existing steel grid sidewalk to be removed and new sidewalk panels installed on the two U.S.A. spans.

REFERENCE

Plans of the existing bridge are available for the Contractor's reference at the Bridge Design Office in Augusta. The plans are reproductions of the original drawings as prepared for the construction of the bridge. It is very unlikely that the plans will show any construction field changes or any alterations which may have been made to the bridge during its life span.

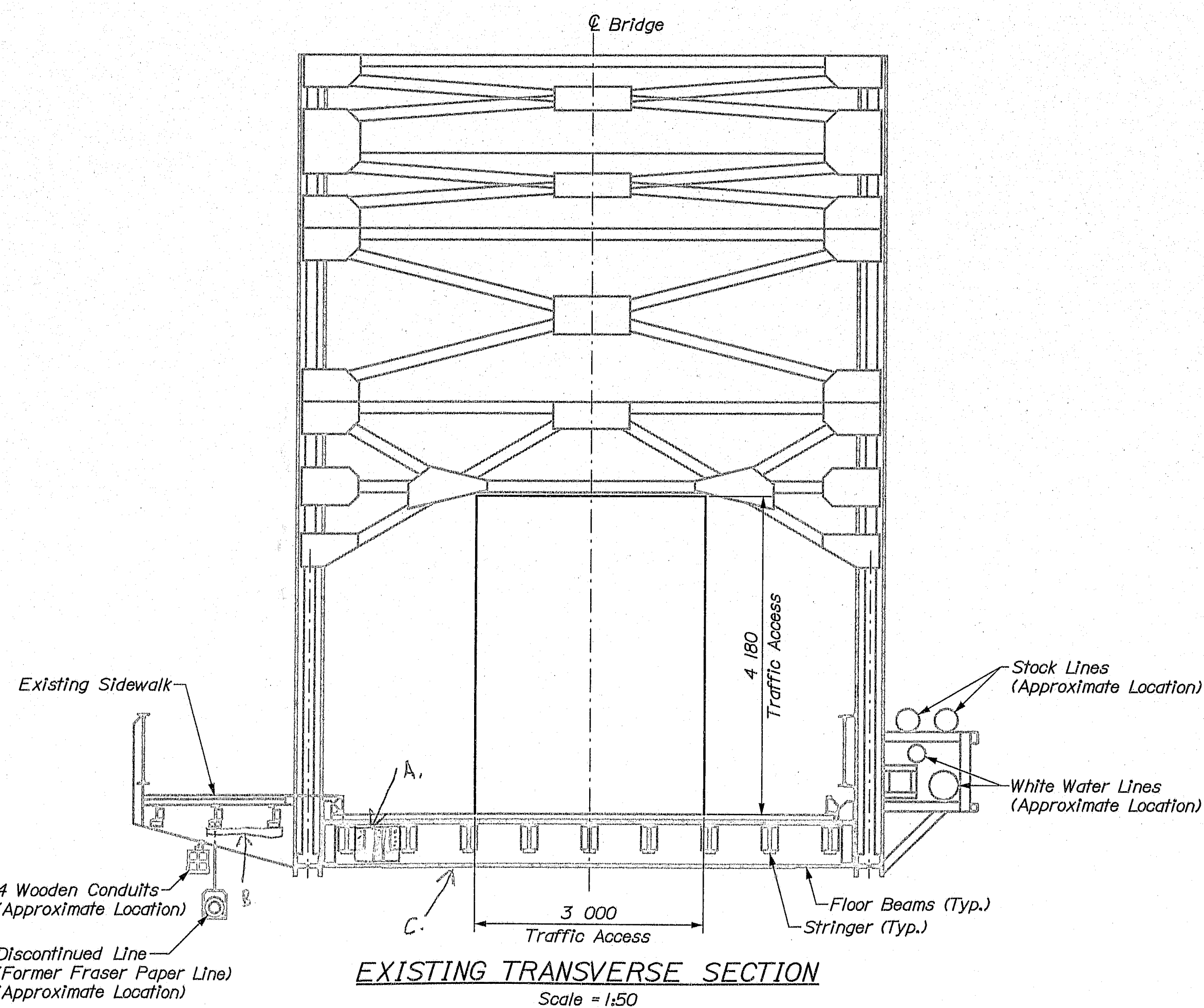
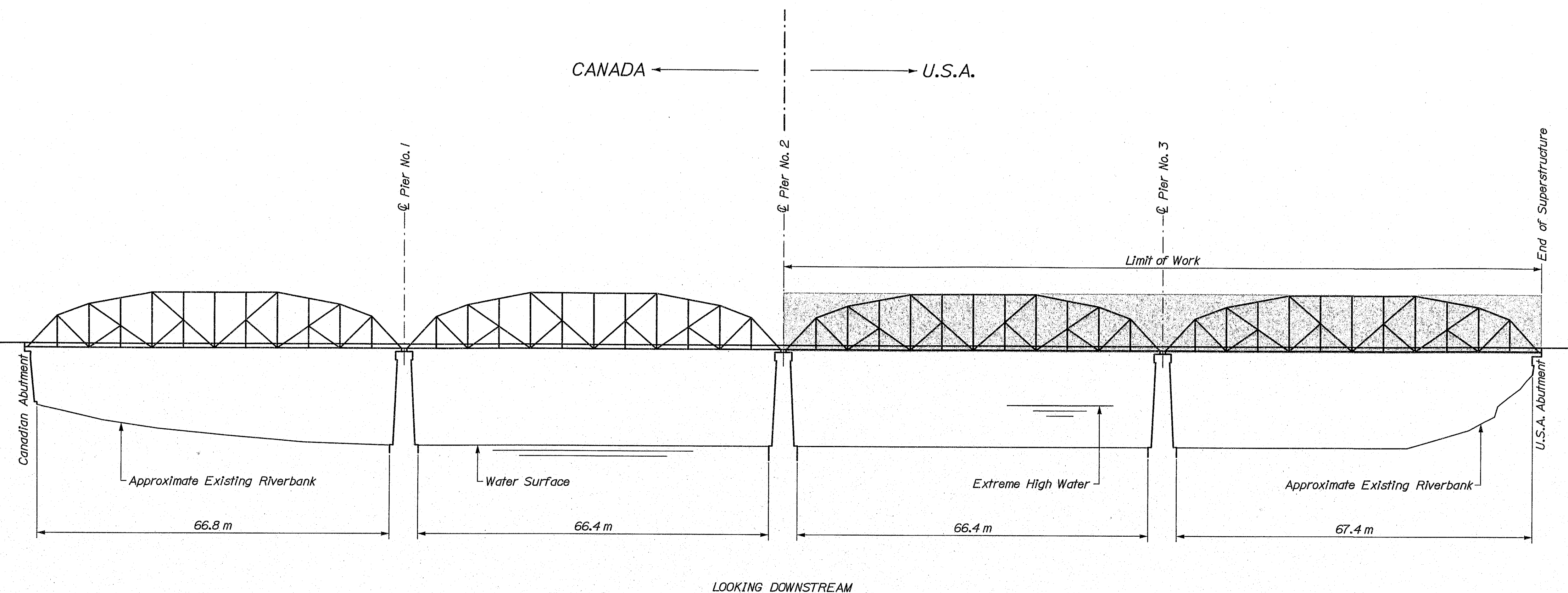
LIST OF DRAWINGS

Title Sheet	1
General Plan, Quantities & Notes.....	2
Sidewalk Plan	3
Sidewalk Details.....	4
Traffic Control Plan	5

STATE OF MAINE DEPARTMENT OF TRANSPORTATION	APPROVED	DATE
	COMMISSIONER	CHIEF ENGINEER
PROJECT INFORMATION	PROGRAM	PROJECT MANAGER
	DESIGNER	CONSULTANT
PROJECT INFORMATION	BRIDGE	PROJECT RESIDENT
	LOCALITY	CONTRACTOR
PROJECT INFORMATION	LOCALITY	PROJECT COMPLETION DATE
	LOCALITY	PROJECT COMPLETION DATE
MADAWASKA INTERNATIONAL BRIDGE	TITLE SHEET	SHEET NUMBER
		1
		OF 4

AS-BUILTS 1-26-05 TAU 134-50

PROJECT DESIGN ENGINEER	BY	DATE
CHECKED	D. Shaw	10/2001
REVISIONS		
FIELD CHANGES		



ESTIMATED QUANTITIES			
ITEM NO.	DESCRIPTION	QUANTITY	UNIT
504.70	STRUCTURAL STEEL FABRICATED & DELIVERED (2250 Kg)	1	L.S.
504.71	STRUCTURAL STEEL ERECTION (2250 Kg)	1	L.S.
504.79	STEEL GRID BRIDGE FLOORING	270	M ²
506.17	SURFACE PREPARATION OF EXISTING STRUCTURAL STEEL	1	L.S.
506.144	FIELD PAINTING OF EXISTING AND NEW STRUCTURAL STEEL	1	L.S.
506.18	CONTAINMENT AND POLLUTION CONTROL MEASURES	1	L.S.
506.191	DISPOSAL OF SPECIAL WASTE OR HAZARDOUS WASTE	1	L.S.
627.75	WHITE OR YELLOW PAVEMENT AND CURB MARKING	10	M ²
627.77	REMOVING PAVEMENT MARKING	10	M ²
627.791	TEMPORARY 100 mm PLASTIC PAVEMENT MARKING LINE YELLOW OR WHITE	100	M
639.19	FIELD OFFICE TYPE B	1	L.S.
643.72	TEMPORARY TRAFFIC SIGNAL	1	E.A.
652.381	UNIFORM TRAFFIC OFFICERS	1,100	MH
652.39	WORK ZONE TRAFFIC CONTROL	1	L.S.
659.10	MOBILIZATION	1	L.S.
660.21	ON-THE-JOB TRAINING (BID)	1	L.S.

METRIC 1. All dimensions are in millimeters unless otherwise noted.
2. All elevations and stations are in meters.

PROJECT NUMBER	SHEET NO.	TOTAL SHEETS
BR-7623000E	2	4

GENERAL CONSTRUCTION NOTES

- All utility facilities shall be adjusted by the respective utilities unless noted.
- All dimensions and details shown for the existing structure shall be verified in the field by the Contractor prior to bid.
- The Contractor shall take precautions to prevent any damage to the utility pipes, wires, insulation and covering. Any damages occurring as the result of the painting project shall be repaired in a manner approved by the Resident Engineer, at the Contractor's expense. No additional payment will be made for repairs to damaged lines or coverings.
- To protect and preserve the galvanized finish, new galvanized stringers shall be masked at the point of attachment to the old transverse floor beams in a manner approved by the Resident Engineer.

AS-BUILTS NOTES

- FLOOR BEAM STEFFEWEBS. 22 IN Varies Locations on SPAN #1.
- Sidewalk Overhang Fix For First Overhang. Bracket on Sidewalk on SPAN #1.
- Repair of Crossbracing on various areas on SPAN #1.

134-57

BRIDGE NO. 2399

STATE OF MAINE
DEPARTMENT OF TRANSPORTATION
INTERNATIONAL BRIDGE
OVER
ST. JOHN RIVER
IN THE TOWN OF
MADAWASKA
AROOSTOOK COUNTY
FINAL PLAN

SHEET 2 OF 4

AS-BUILTS 1-26-05 TAN

Filename: ... \BRIDGE\MSTA\003_Sup_SWPlan.dgn

Division: BRIDGE

Username: timothy.hebert

Date: 1/21/2005

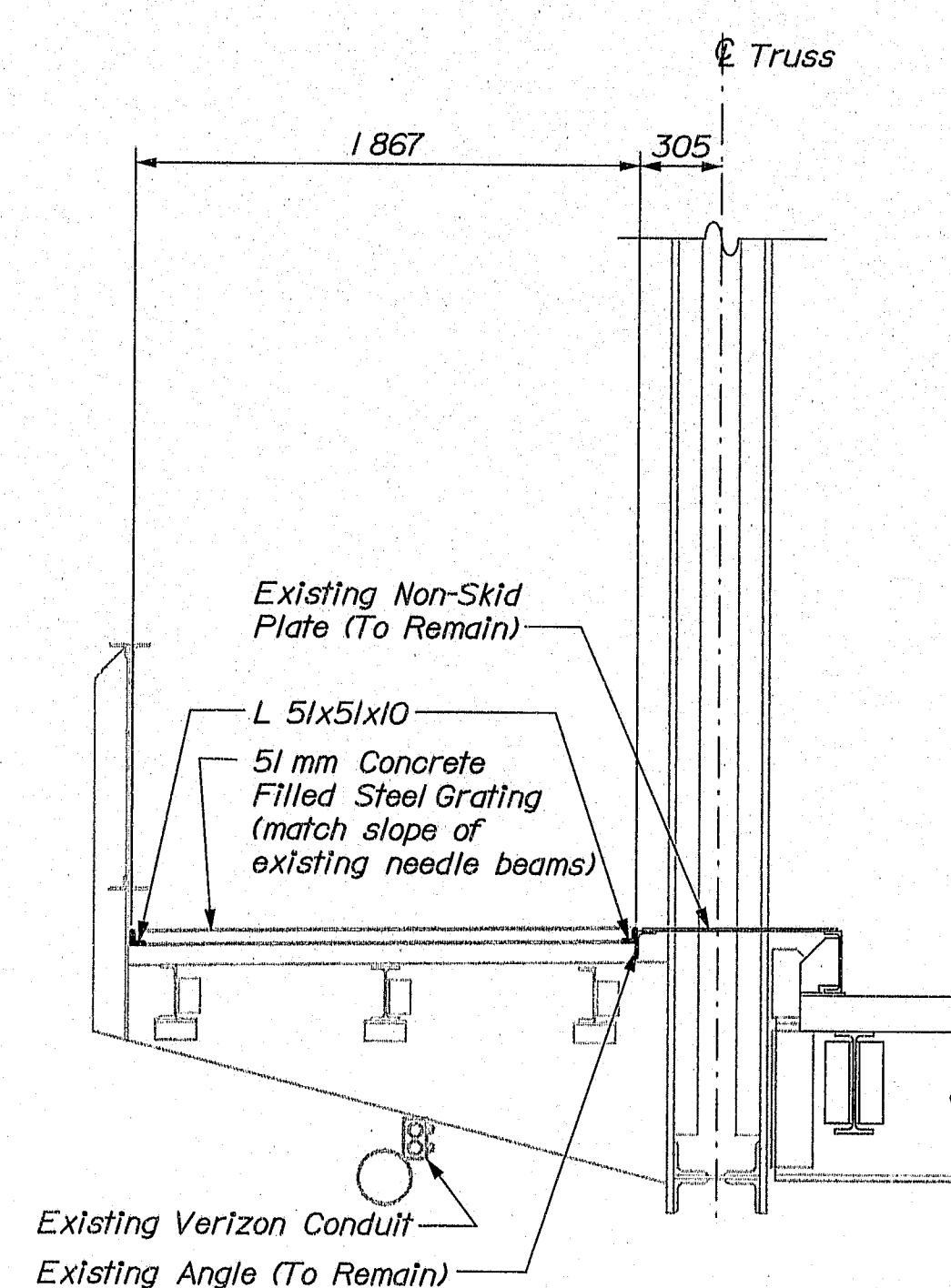
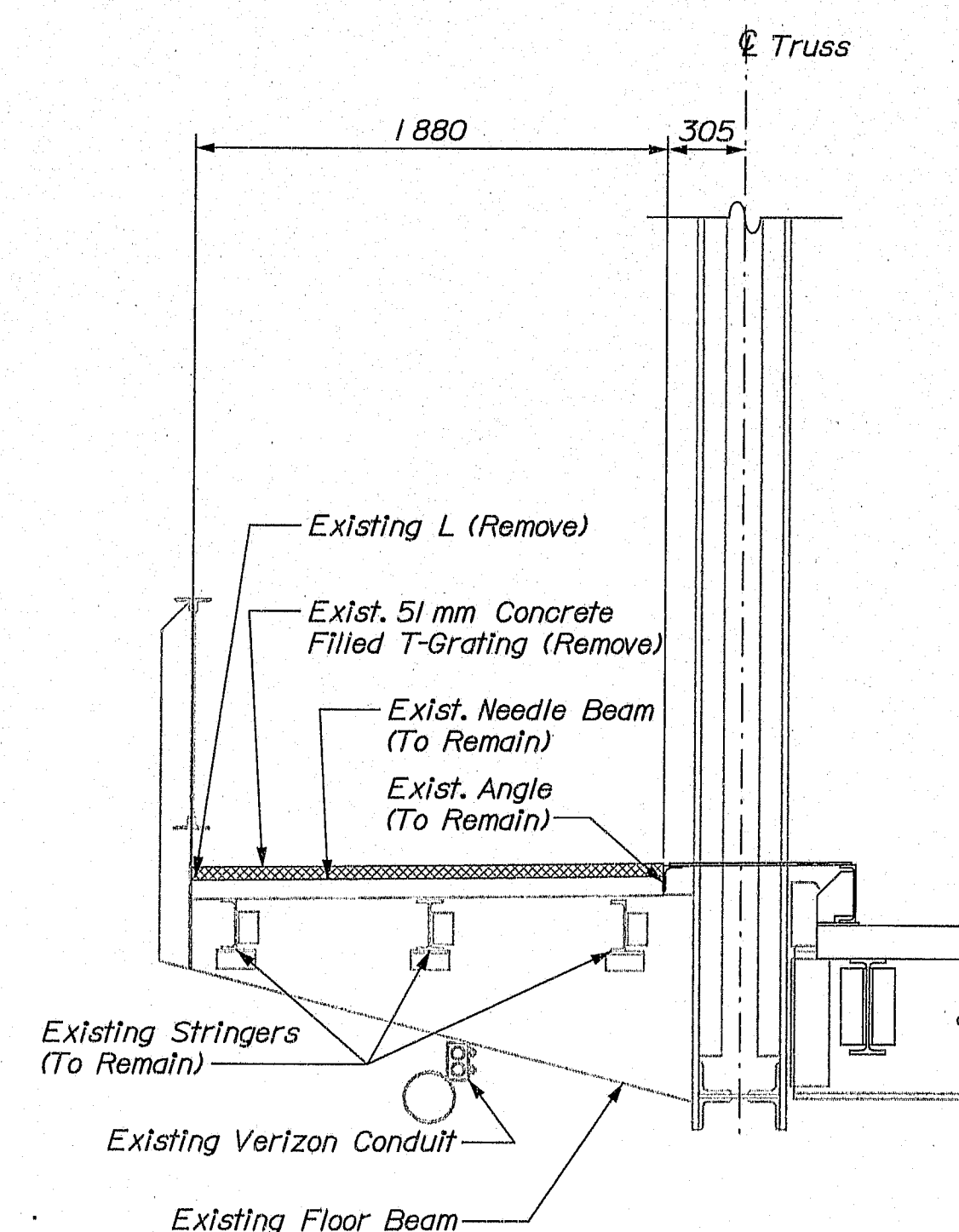
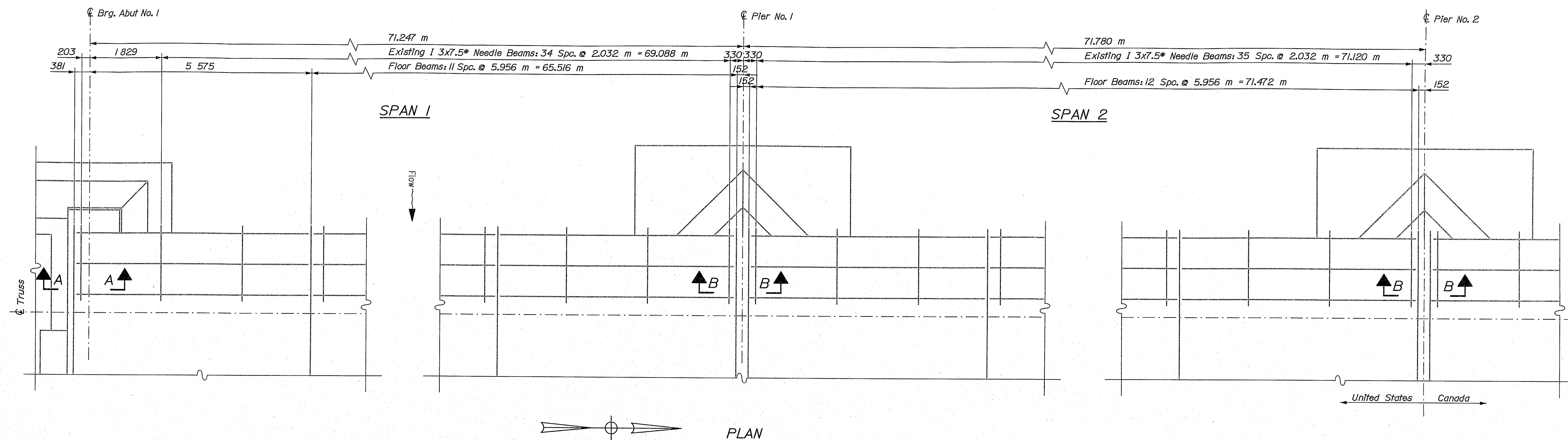
PROJECT DESIGN ENGINEER	BY	DATE
DESIGN-DETAILED	E. CASWELL	Dec 2002
CHECKED		
REVISIONS		
FIELD CHANGES		

PLANS

METRIC 1. All dimensions are in millimeters unless otherwise noted.
2. All elevations and stations are in meters.

FILE NO.	STATE	PROJECT NUMBER	SHEET NO.	TOTAL SHEETS
1	MAINE	NH-7623(10)X	3	4

7623.10



SCOPE OF WORK

1. Remove existing concrete filled steel sidewalk T-Grating over Spans 1 & 2.
2. Remove sidewalk expansion joints at Abutment No. 1 and Pier No. 1 in total.
3. Remove the southerly half of the sidewalk expansion joint at Pier No. 2.
4. Install new expansion joints at Abutment No. 1 and Pier No. 1. Install partial expansion joint at Pier No. 2.
5. Install new concrete filled steel sidewalk grating over Spans 1 & 2.
6. Maintain pedestrian traffic at all times.

134-52

BRIDGE NO. 2399

STATE OF MAINE
DEPARTMENT OF TRANSPORTATION
INTERNATIONAL BRIDGE
OVER
ST. JOHN RIVER
IN THE TOWN OF
MADAWASKA
AROOSTOOK COUNTY
SIDEWALK PLAN

SHEET OF AUGUSTA, MAINE

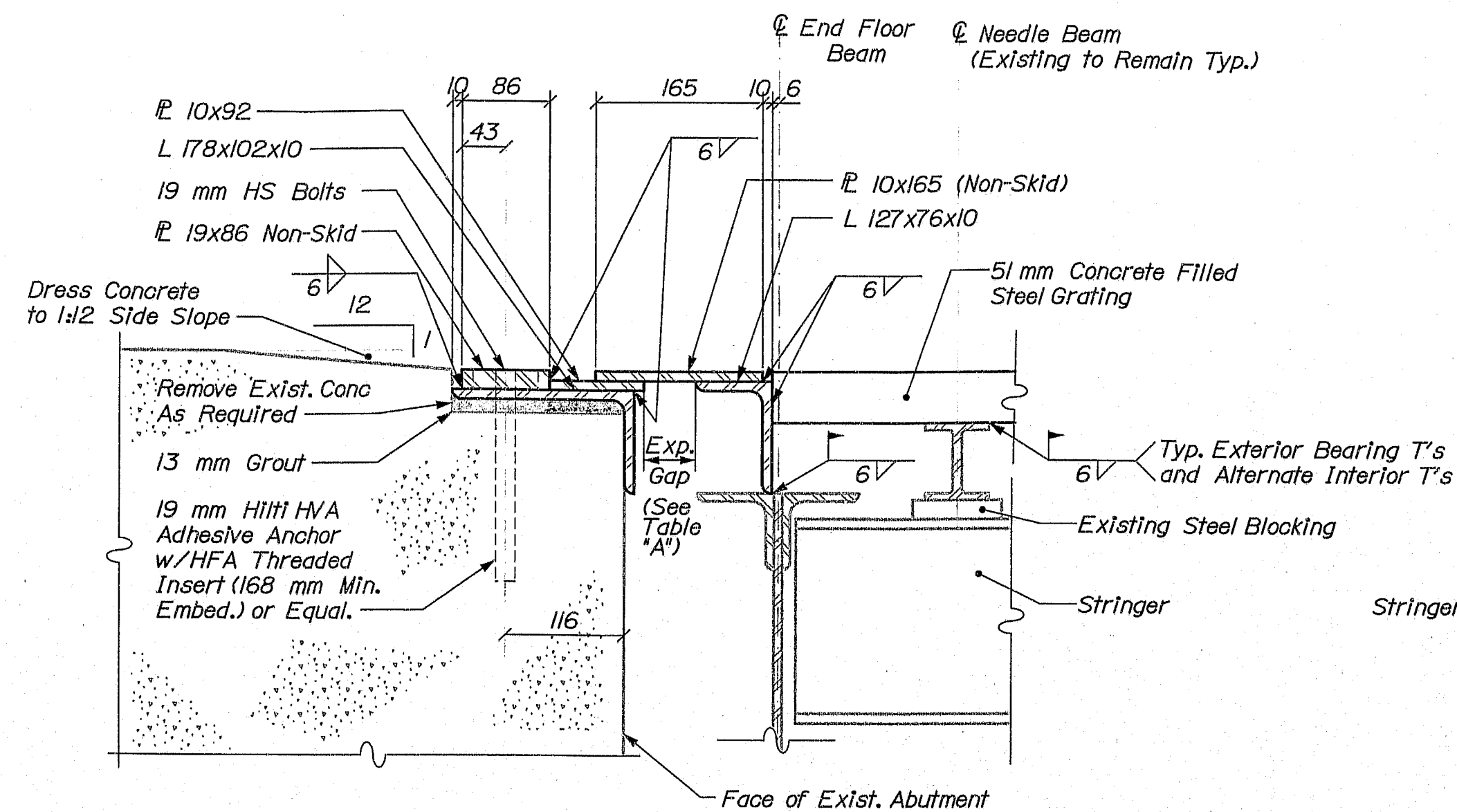
AS-BUILTS 1-26-05 TAU

Filename: ...BRIDGE\WSTA\004_Sup_SWDET1.dgn

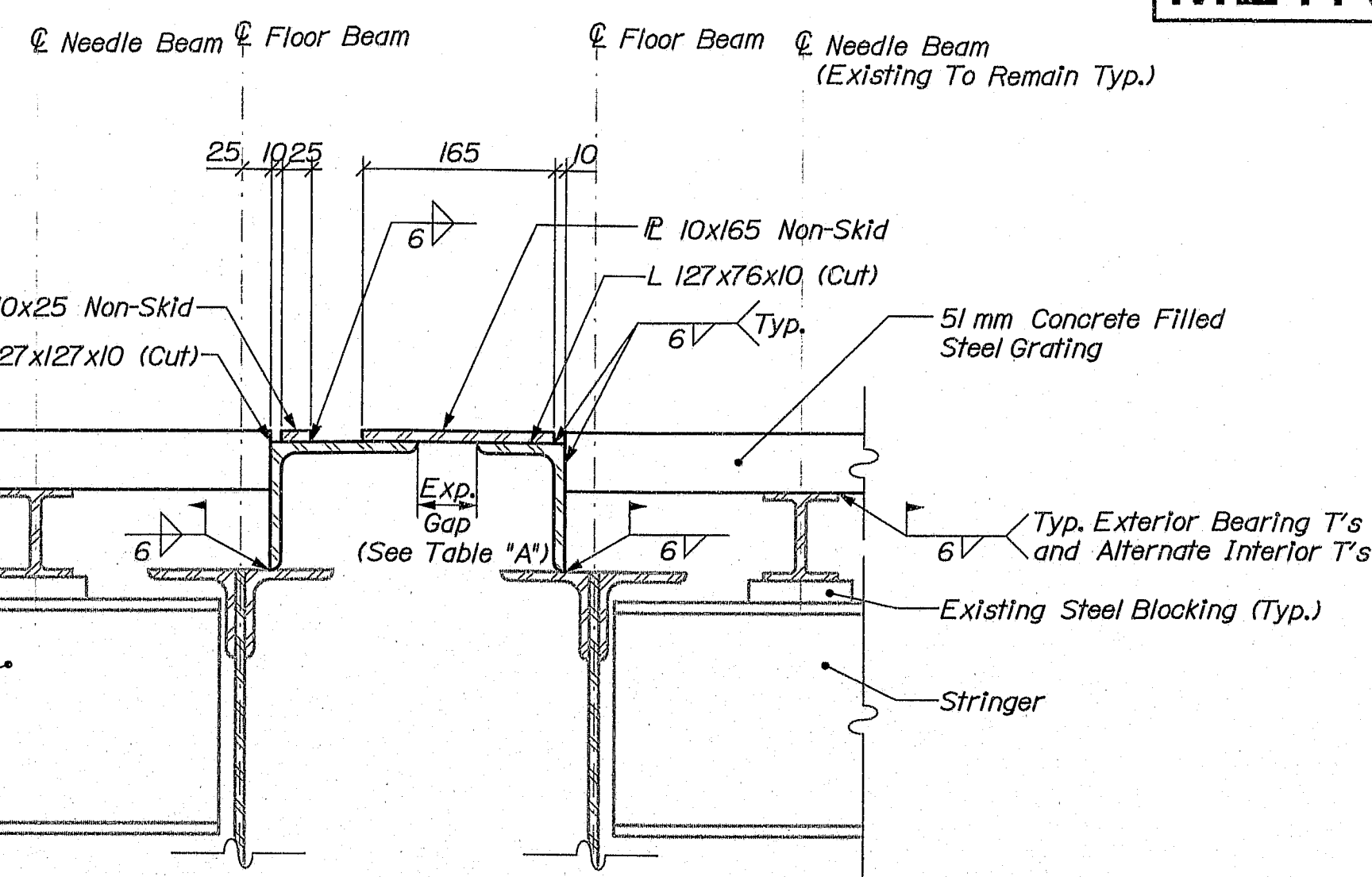
Username: timothy.hebert

Division: BRIDGE

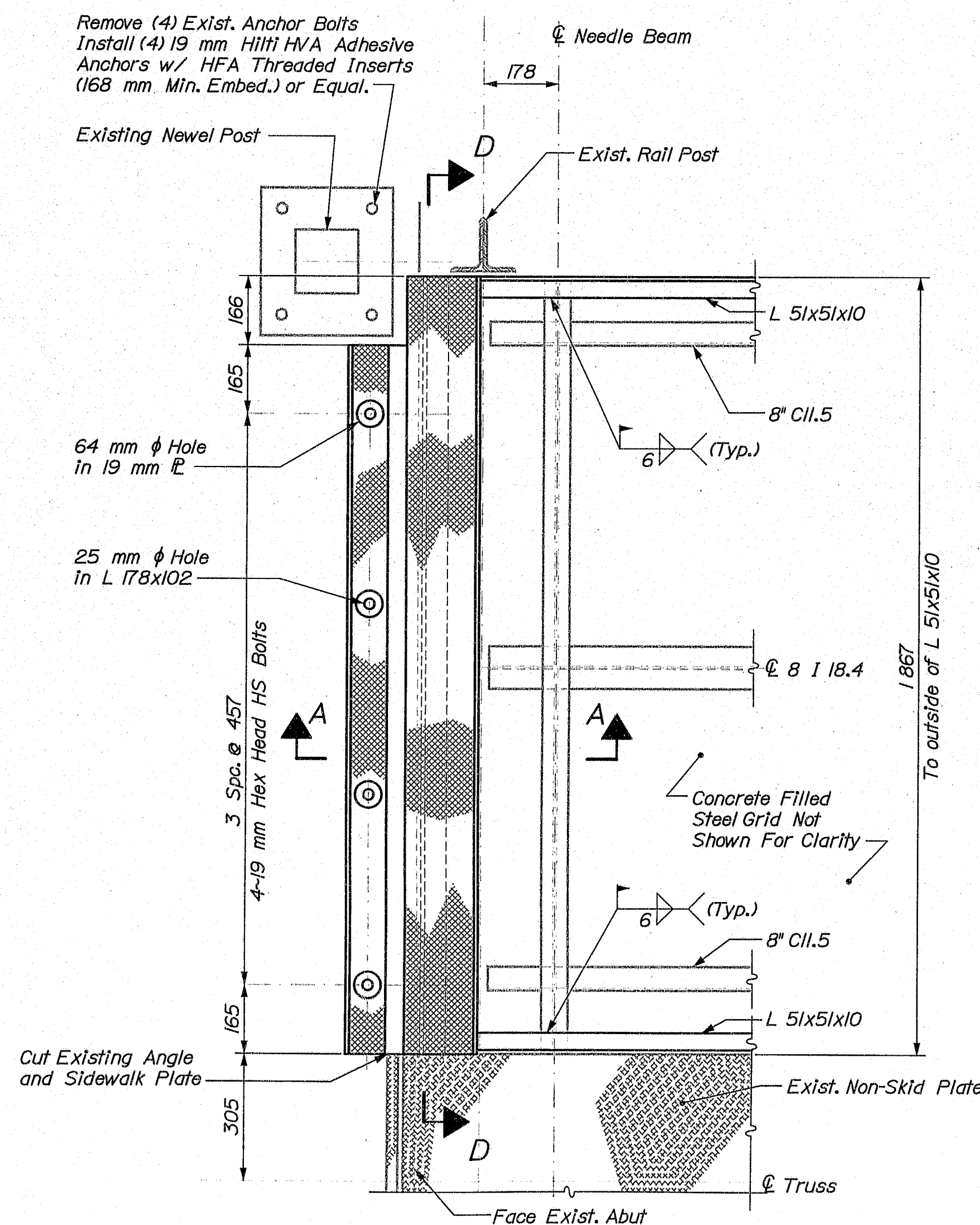
PROJECT DESIGN ENGINEER	BY	DATE
DESIGN-Detailed	E. CASWELL	Dec 2002
CHECKED		
REVISIONS		
FIELD CHANGES		



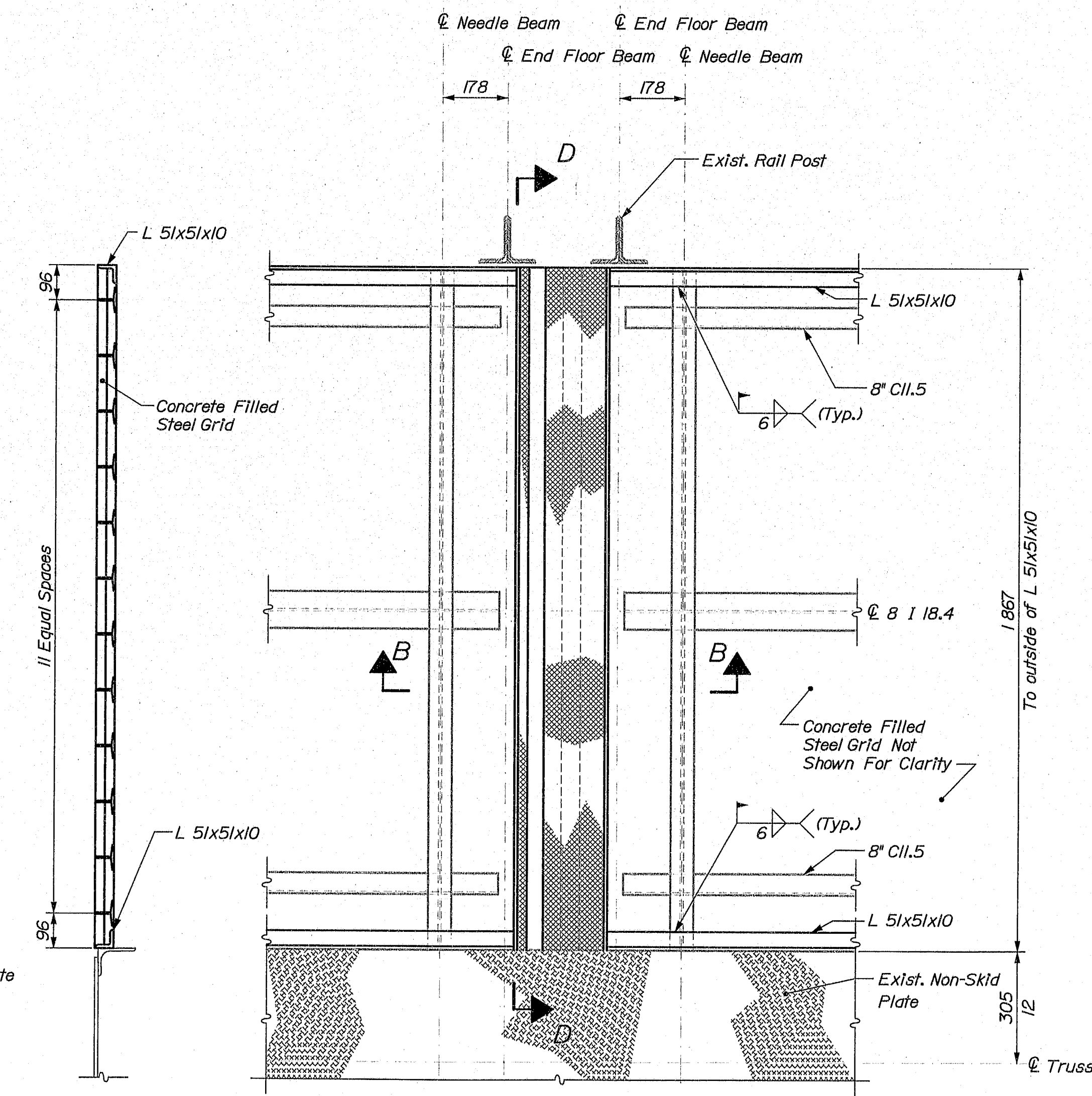
SECTION A-A



SECTION B-B



EXPANSION JOINT PLAN
ABUTMENT NO. 1



TYPICAL GRID
SECTION

EXPANSION JOINT PLAN
PIERS

NOTE:
Pier No. 1 Shown, L 127x127x10 and L 10x25
Non-Skid only at Pier No. 2.

METRIC

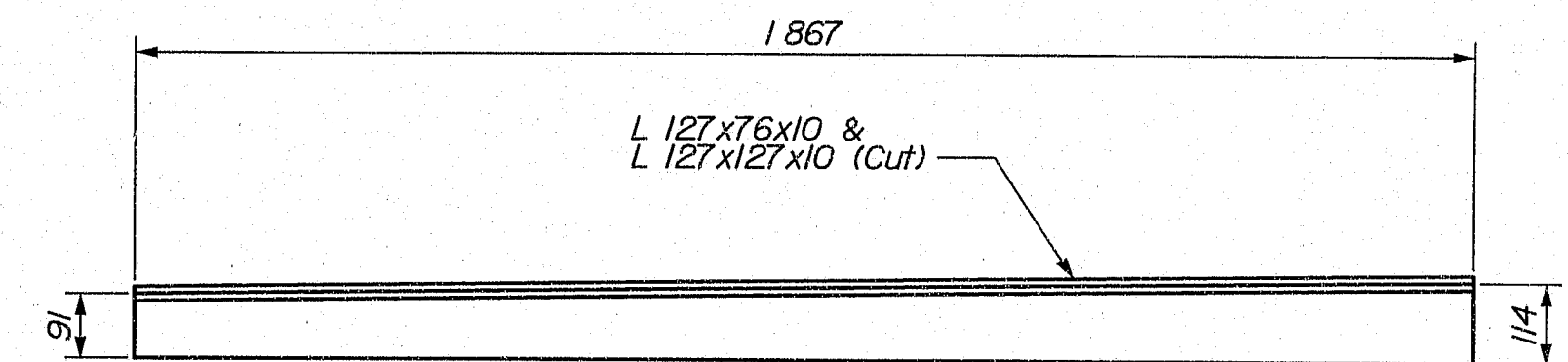
1. All dimensions are in millimeters unless otherwise noted.
2. All elevations and stations are in meters.

FWWA REG. NO.	STATE	PROJECT NUMBER	SHEET NO.	TOTAL SHEETS
1	MAINE	NH-7623(10)X	4	4

7623.10

NOTES

- The Contractor shall field verify all dimensions prior to commencing the work.
- Steel grating shall be ArmaDek 2 inch T sidewalk flooring with 6" main bar spacing as manufactured by L.B. Foster Co., or approved equal. Grating panels shall be spliced.
- Structural steel shapes, bars and plates shall conform to ASTM A709/A709M, Grade 250. Bolts shall conform to ASTM A325M.
- All steel, including steel grating, shall be galvanized in accordance with ASTM A123 after fabrication.
- All bolts, nuts and washers shall be galvanized in accordance with ASTM A153 after fabrication.
- Concrete shall be class LP with a maximum aggregate size of 9.5 mm. Payment will be considered incidental to Item 504.79, Steel Grid Bridge Flooring.
- The contractor may adjust the location of the abutment sidewalk plates to accommodate dimensional variations.
- Paint all areas where galvanized surfaces are disturbed with two coats of Tnemec 90E-92 Inorganic zinc rich paint or approved equal.
- After abutment sidewalk plates are secured to the abutments fill bolt holes with approved sealant.
- Payment for removal and disposal of the existing concrete filled steel grid flooring will be considered incidental to Item 504.79, Steel Grid Bridge Flooring.
- Payment for Adhesive Anchors and Sealant will be considered incidental to related Contract Items.
- Lead paint shall be removed from existing needle beams as necessary to weld metal grating in accordance with the Specifications. Payment for lead paint removal shall be considered incidental to Related Contract Items.
- The Contractor shall take care not to damage Verizon Fiber Optic Cables suspended below sidewalk in wooden conduit. Protection for the cables and conduits shall be provided as required. Payment for necessary protection will be considered incidental to Related Contract Items.



SECTION D-D

TABLE "A" EXPANSION GAPS	
With Due Regard to other dimensions shown, set Gaps by this table.	
Temperature in Degrees C	Gap in mm
49	13
42	19
34	25
27	32
20	38
13	44
6	51
-2	57
-9	64
-16	70
-23	76
-31	83
-38	89

134-53

BRIDGE NO. 2399

STATE OF MAINE
DEPARTMENT OF TRANSPORTATION
INTERNATIONAL BRIDGE
OVER
ST. JOHN RIVER
IN THE TOWN OF
MADAWASKA
AROOSTOOK COUNTY
SIDEWALK DETAILS

SHEET OF AUGUSTA, MAINE

AS-BUILT 1-26-05 TAH